



CETEC

Connect and Drive the World

ROLLER
Supply



Overview

Who we are



- ◆ An Integrated Solution Provider mainly in Cement Industry
- ◆ A Private Company in Beijing
- ◆ ISO 9001 quality certified company
- ◆ National high-tech enterprise of China
- ◆ Supplies to the Global Leading Building Material Players
- ◆ Focuses on Overseas Market currently covers
Asia, Africa, America, Europe, Oceania

- Expert for Conveyor & Bulk Material Handling
- Global marketing and project management
- Engineering & Design of Overland, Curve and Pipe Conveyor under GB/ISO/CEMA/DIN Code
- Manufacturer and Supply Roller, Pulley, belting etc.

Our Work

Business Scope



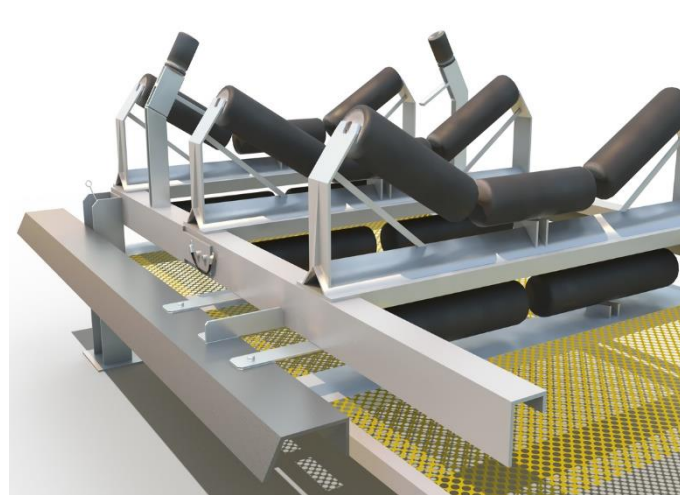
Conveyors & Components



Bulk Material Handling



CEMA/ISO/GB Idler



For Idler/Roller Supply
We provide complete set of

- ◆ Carry Idler
- ◆ Return Idler
- ◆ Impact Idler
- ◆ Self-align Carry Idler
- ◆ Self-align Return Idler
- ◆ Pipe Conveyor Roller
- ◆ Self-cleaning Roller
- ◆ Hanger Roller

Based on GB/ISO/CEMA
Codes and Specifications

Roller Production Process



ERW Steel Pipe Cutting



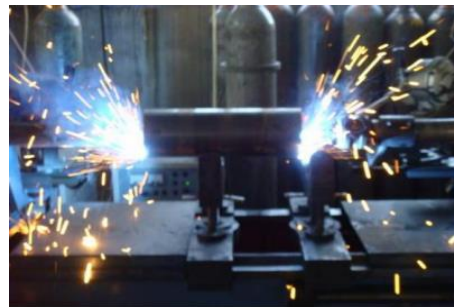
Roller Pipe Inner Wall Polishing



Roller Shaft Preparing



Assemble of casing, shaft, sealing



Automatic Welding of Rings



Testing and Packaging

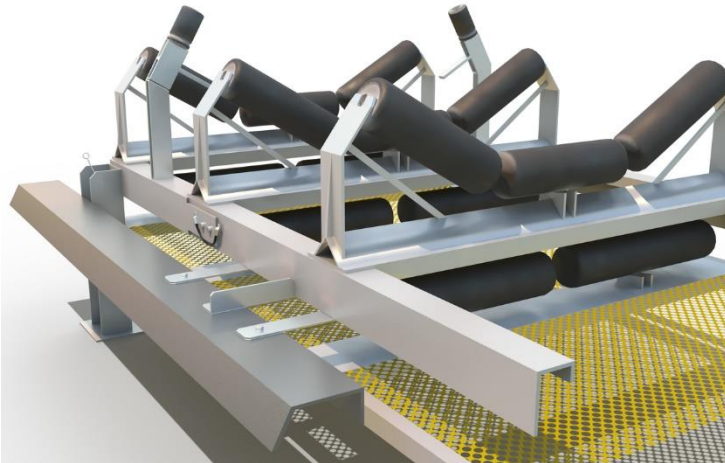
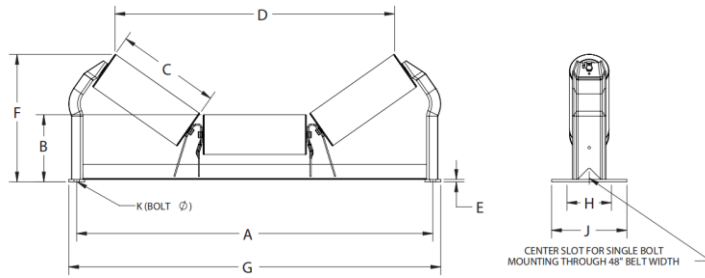
Five Start Quality

- ◆ Material Guarantee
ERW Steel Pipe for Roller Q235/Q345 Available
Shaft 45# Steel(higher than Q235)
- ◆ Bearing and Sealing Element
Bearing from reputed Suppliers
Water Proof Labyrinth Sealing
- ◆ Production Procedure
ERW Pipe Automatic Cutting with high accuracy
Inner wall polish for good sealing and assemble effect
Shaft Positioning and Drilling with high accuracy
Press Punch machine for roller assemble,
CO2 Arc Automatic Welding Machine
- ◆ Testing
Rotating Resistance Test
Waterproof Test



CEMA CARRY ROLLER

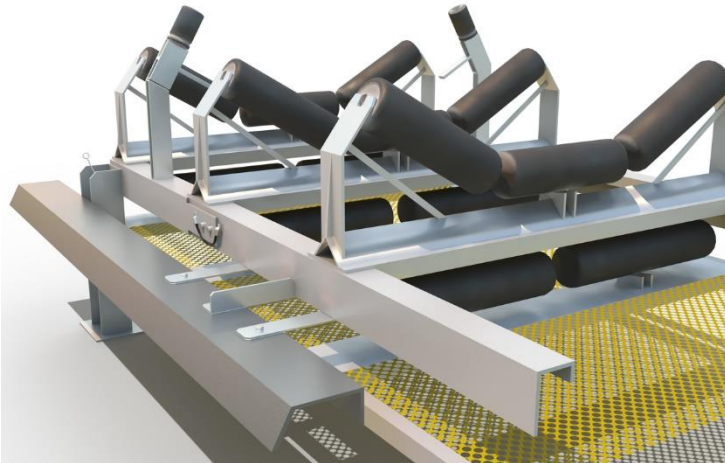
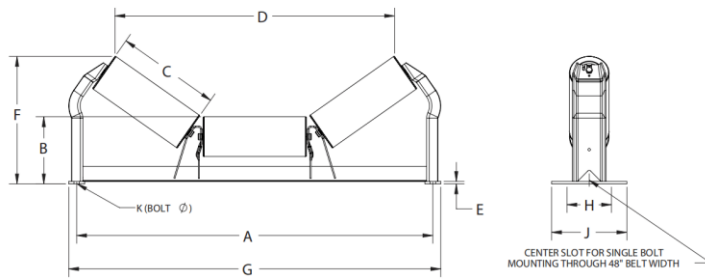
CEMA C 35° TROUGHING
IDLERS (EQUAL LENGTH ROLLERS)



Diameter	BW	A	B	C	D	E	F	G	H**	J	K	WT (#)
C4	18	27	8	7 1/16	20	1/4	12 1/4	29	6	8	1/2	35
	24	33	8	9 1/16	25 5/16	5/16	13 3/8	35	6	9 1/2	5/8	42
	30	39	8	11 1/16	30 9/16	5/16	14 9/16	41	6	9 1/2	5/8	50
	36	45	8	13 1/16	35 13/16	5/16	15 11/16	47	6	9 1/2	5/8	56
	42	51	8-1/2	15 1/16	41-1/8	5/16	17 5/16	53	7 1/2	9 1/2	5/8	71
C5	18	27	8 1/2	7 1/16	19 7/16	1/4	12 3/8	29	6	8	1/2	41
	24	33	8 1/2	7 1/16	24 11/16	5/16	13 13/16	35	6	9 1/2	5/8	49
	30	39	8 1/2	11 1/16	30	5/16	14 13/16	41	6	9 1/2	5/8	59
	36	45	8 1/2	13 1/16	35 1/4	5/16	16 1/8	47	6	9 1/2	5/8	66
	42	51	9	15 1/16	40 9/16	5/16	17 11/16	53	7 1/2	9 1/2	5/8	82
	48	57	9	17 1/16	45 13/16	5/16	18 7/8	59	7 1/2	9 1/2	5/8	91
	54	63	9	19 1/16	51 1/8	3/8	20	65 1/2	9	11	5/8	104
	60	69	9	21 1/16	56 3/8	3/8	21 3/16	71 1/2	9	11	5/8	116
C6	18	27	9	7 1/16	18 7/8	1/4	13 1/16	29	6	8	1/2	49
	24	33	9	9 1/16	24 1/8	5/16	14 3/16	35	6	9-1/2	5/8	59
	30	39	9	11 1/16	29 7/16	5/16	15 3/8	41	6	9-1/2	5/8	71
	36	45	9	13 1/16	34 11/16	5/16	16 1/2	47	6	9-1/2	5/8	80
	42	51	9 1/2	15 1/16	40	5/16	18 1/8	53	7-1/2	9-1/2	5/8	98
	48	57	9 1/2	17 1/16	45 1/4	5/16	19 1/4	59	7-1/2	9-1/2	5/8	109
	54	63	9 1/2	19 1/16	50 1/2	3/8	20 7/16	65	9	11	5/8	125
60	69	9 1/2	21 1/16	55 13/16	3/8	21 9/16	71-1/2	9	11	5/8	138	

CEMA CARRY ROLLER

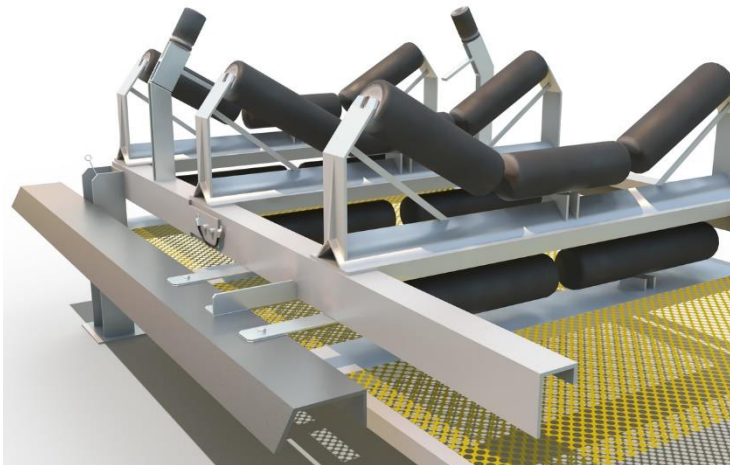
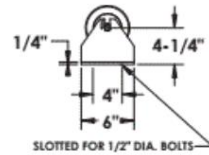
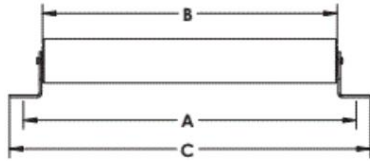
CEMA D 35° TROUGHING IDLERS (EQUAL LENGTH ROLLERS)



Diameter	BW	A	B	C	D	E	F	G	H**	J	K	WT (#)
D5	24	33	8 1/2	9 1/16	24 11/16	5/16	13 13/16	35	6	9 1/2	5/8	55
	30	39	8 1/2	11 1/16	30	5/16	14 15/16	41	6	9 1/2	5/8	66
	36	45	9	13 1/16	35 1/4	5/16	16 1/8	47	6	9 1/2	5/8	74
	42	51	9	15 1/16	40 9/16	5/16	17 11/16	53	7 1/2	9 1/2	5/8	90
	48	57	9 3/8	17 1/16	45 13/16	5/16	18 7/8	59	7 1/2	9 1/2	5/8	99
	54	63	9 7/16	19 1/16	51 1/8	3/8	20 5/16	65	9	11	5/8	113
	60	69	9 7/16	21 1/16	56 5/16	3/8	21 3/16	71 1/2	9	11	5/8	126
	72	81	9 7/16	25 1/16	66 7/8	3/8	23 15/16	83 1/2	9	11	5/8	145
D6	24	33	9	9 1/16	24 1/8	5/16	14 3/16	35	6	9 1/2	5/8	66
	30	39	9	11 1/16	29 7/16	5/16	15 3/8	41	6	9 1/2	5/8	78
	36	45	9 1/2	13 1/16	34 11/16	5/16	16	47	6	9 1/2	5/8	88
	42	51	9 1/2	15 1/16	40	5/16	18 3/16	53	7 1/2	9 1/2	5/8	106
	48	57	9 7/8	17 1/16	45 1/4	5/16	19 11/16	59	7 1/2	9 1/2	5/8	117
	54	63	9 15/16	19 1/16	50 1/2	5/16	20 7/8	65	9	11	5/8	134
	60	69	9 15/16	21 1/16	55 13/16	3/8	22	71 1/2	9	11	5/8	148
	72	81	9 15/16	25 1/16	66 15/16	3/8	24 5/16	83 1/2	9	11	5/8	171

CEMA RETURN ROLLER

CEMA C and D Flat Return Idler

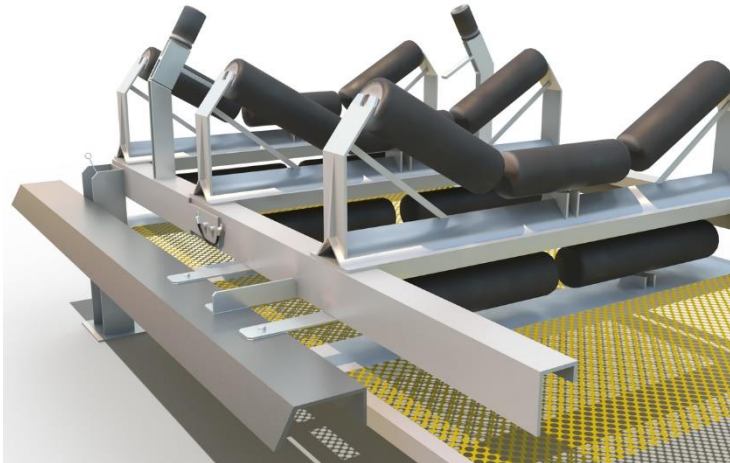
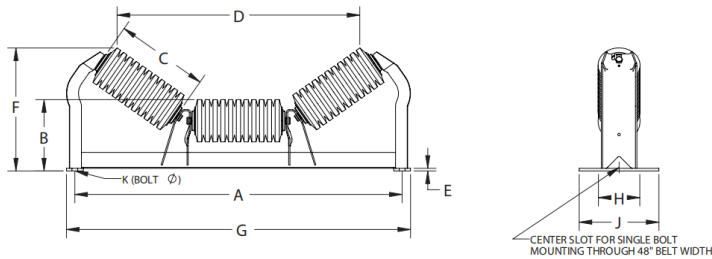


BW	A	B	C	Weight		
				C4	C5	C6
18	27	21 5/16	28 3/4	19	25	32
24	33	27 5/16	34 3/4	23	29	39
30	39	33 5/16	40 3/4	26	34	45
36	45	39 5/16	46 3/4	30	39	52
42	51	45 5/16	52 3/4	33	44	59
48	57	51 5/16	58 3/4	36	48	65
54	63	57 5/16	64 3/4	40	53	72
60	69	63 5/16	70 3/4	43	58	79

BW	A	B	C	D5	D6
24	33	27 5/16	34 3/4	33	42
30	39	33 5/16	40 3/4	38	49
36	45	39 5/16	46 3/4	43	57
42	51	45 5/16	52 3/4	48	64
48	57	51 5/16	58 3/4	54	71
54	63	57 5/16	64 3/4	59	78
60	69	63 5/16	70 3/4	64	85
72	81	75 5/16	82 3/4	74	99

CEMA IMPACT ROLLER

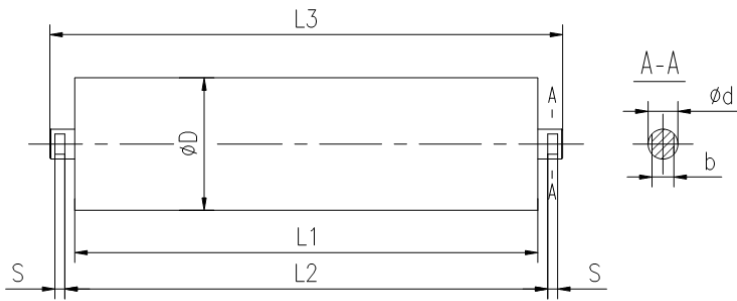
CEMA C 35° IMPACT IDLERS
(EQUAL LENGTH)



Diameter	BW	A	B	C	D	E	F	G	H**	J	K	WT (#)
C4	18	27	8	7 1/16	19 1/8	1/4	12 1/8	29	6	8	1/2	38
	24	33	8	9 1/16	24 7/16	5/16	13 1/4	35	6	9 1/2	5/8	46
	30	39	8	11 1/16	29 5/8	5/16	14 7/16	41	6	9 1/2	5/8	56
	36	45	8	13 1/16	34 15/16	5/16	15 9/16	47	6	9 1/2	5/8	71
	42	51	8 1/2	15 1/16	40 3/16	5/16	17 3/16	53	7 1/2	9 1/2	5/8	90
C5	18	27	8 1/2	7 1/16	18 9/16	1/4	12 1/4	29	6	8	1/2	42
	24	33	8 1/2	9 1/16	23 13/16	5/16	13 11/16	35	6	9 1/2	5/8	45
	30	39	8 1/2	11 1/16	29 1/6	5/16	14 11/16	41	6	9 1/2	5/8	63
	36	45	8 1/2	13 1/16	34 3/8	5/16	16	47	6	9 1/2	5/8	79
	42	51	9	15 1/16	39 5/8	5/16	17 9/16	53	7 1/2	9 1/2	5/8	100
	48	57	9	17 1/16	44 7/8	5/16	18 3/4	59	7 1/2	9 1/2	5/8	110
	54	63	9	19 1/16	50 3/16	3/8	19 8/8	65 1/2	9	11	5/8	125
60	69	9	21 1/16	55 7/16	3/8	21 1/16	71 1/2	9	11	5/8	140	
C6	18	27	9	7 1/16	18	1/4	12 15/16	29	6	8	1/2	48
	24	33	9	9 1/16	23 1/4	5/16	14 1/16	35	6	9 1/2	5/8	59
	30	39	9	11 1/16	28 1/2	5/16	15 1/4	41	6	9 1/2	5/8	73
	36	45	9	13 1/16	33 11/16	5/16	16 3/8	47	6	9 1/2	5/8	90
	42	51	9 1/2	15 1/16	39	5/16	18	53	7 1/2	9 1/2	5/8	112
	48	57	9 1/2	17 1/16	44 5/16	5/16	19 1/8	59	7 1/2	9 1/2	5/8	124
	54	63	9 1/2	19 1/16	49 5/8	3/8	20 5/16	65 1/2	9	11	5/8	142
60	69	9 1/2	21 1/16	54 13/16	3/8	21 7/16	71 1/2	9	11	5/8	159	

ISO/GB CARRY ROLLER

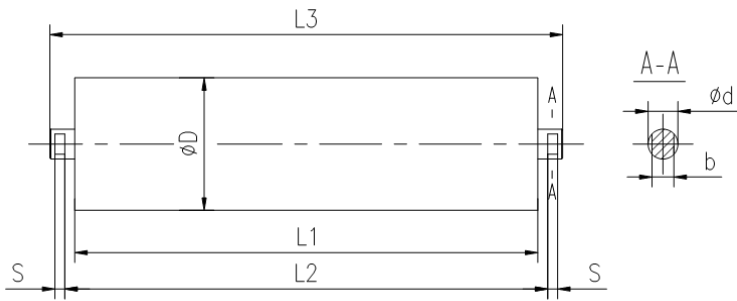
Base on 35° trough Angle, 3 equal rollers for 1 idler.



Belt Width	Dia.	Bearing	L1	L2	L3	S	b	d	Rotation Part (Kg)	Weight (Kg)
650	89	204	250	260	286	10	14	20	2.54	3.36
		205	250	260	286	10	18	25	2.88	3.87
800	89	204	315	325	351	10	14	20	2.98	3.99
		205	315	325	351	10	18	25	3.32	4.63
	108	204	315	325	351	10	14	20	3.71	4.68
		205	315	325	353	10	18	25	3.89	5.51
	133	205	315	325	353	10	18	25	5.59	7.14
		306	315	325	353	10	22	30	6.41	8.51
1000	108	204	380	390	416	10	14	20	4.25	5.41
		205	380	390	418	10	18	25	4.43	6.36
		305	380	390	418	10	18	25	4.64	6.5
	133	205	380	390	418	10	18	25	6.42	8.28
		305	380	390	418	10	18	25	6.47	8.33
		306	380	390	418	10	22	30	7.10	9.62
1200	108	204	465	475	501	10	14	20	4.95	6.37
		205	465	475	503	10	18	25	5.13	7.47
		305	465	475	503	10	18	25	5.35	7.62
		306	465	475	503	10	22	30	5.85	8.9
	133	205	465	475	503	10	18	25	7.50	9.77
		305	465	475	503	10	18	25	7.55	9.82
		306	465	475	503	10	22	30	8.31	11.36
	159	306	465	475	503	10	22	30	10.43	13.48
		307	465	475	503	10	25	35	11.84	16.1

ISO/GB CARRY ROLLER

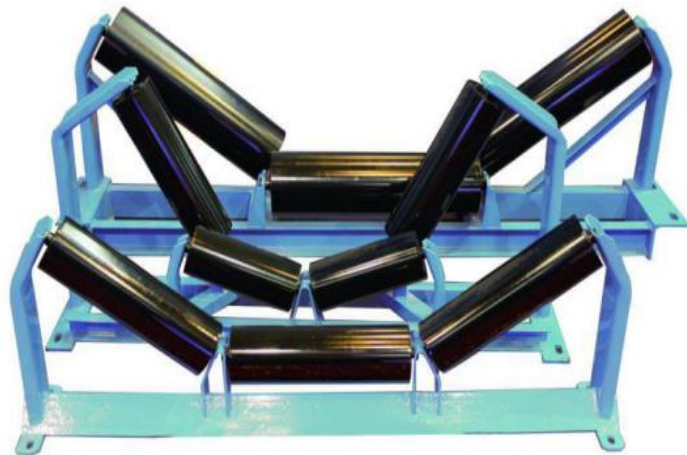
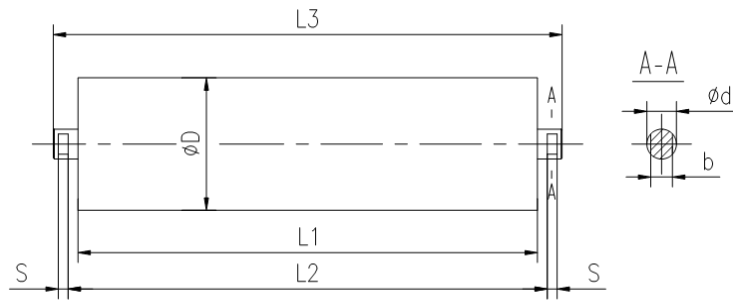
Base on 35° trough Angle, 3 equal rollers for 1 idler.



Belt Width	Dia.	Bearing	L1	L2	L3	S	b	d	Rotation Part (Kg)	Weight (Kg)
1400	108	205	530	540	568	10	18	25	5.67	8.34
		305	530	540	568	10	22	25	6.20	8.47
		306	530	540	568	10	22	30	6.39	9.85
	133	205	530	540	568	10	18	25	8.33	10.92
		305	530	540	568	10	18	25	8.37	10.96
		306	530	540	568	10	22	30	9.14	12.6
	159	305	530	540	568	10	18	25	11.34	13.93
		306	530	540	568	10	22	30	11.38	14.84
		307	530	540	568	10	25	35	12.93	17.77
		308	530	540	568	10	32	40	13.39	19.4
		309	530	540	572	12	36	45	13.95	21.8
		194	307	530	540	568	10	25	35	17.31
308	530		540	568	10	32	40	17.66	24.09	
309	530		540	572	12	36	45	21.56	29.36	
1600	133	205	600	610	638	10	18	25	9.23	12.15
		305	600	610	638	10	18	25	9.28	12.2
		306	600	610	638	10	22	30	10.03	13.93
	159	305	600	610	638	10	18	25	12.55	15.47
		306	600	610	638	10	22	30	12.58	16.48
		307	600	610	638	10	25	35	14.13	19.59
		308	600	610	638	10	32	40	14.59	21.36
		309	600	610	642	12	36	45	15.16	24
		194	307	600	610	638	10	25	35	19.26
	308		600	610	638	10	32	40	19.61	26.73
	309		600	610	642	12	36	45	22.27	31.42
	1800	133	205	700	710	738	10	18	25	10.49
305			700	710	738	10	18	25	10.54	13.95
306			700	710	738	10	22	30	11.30	15.84
159		305	700	710	738	10	18	25	14.25	17.66
		306	700	710	738	10	22	30	14.29	18.83
		307	700	710	738	10	25	35	15.85	22.2
		308	700	710	738	10	32	40	16.30	24.16
		309	700	710	742	12	36	45	16.87	27.13
		194	307	700	710	738	10	25	35	21.21
308			700	710	738	10	32	40	21.56	29.36
309			700	710	742	12	36	45	24.22	34.24

ISO/GB RETURN ROLLER

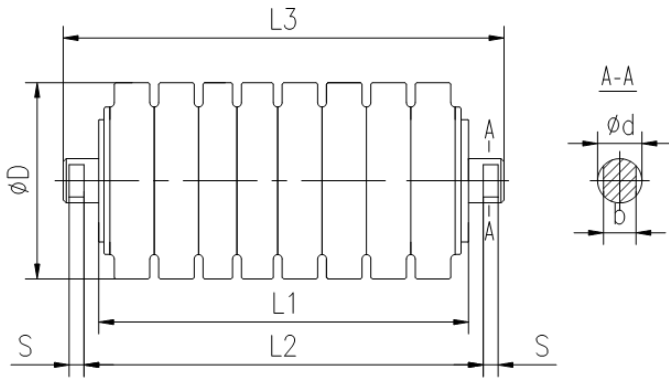
Base on 10° trough Angle, 2 equal rollers for 1 idler.



Belt Width	Dia.	Bearing	L1	L2	L3	S	b	d	Rotation Part(Kg)	Weight(Kg)
1000	108	204	600	610	636	10	14	20	6.07	7.89
		205	600	610	638	10	18	25	6.25	9.24
		305	600	610	638	10	18	25	6.46	9.38
	133	205	600	610	638	10	18	25	9.23	12.15
		305	600	610	638	10	18	25	9.28	12.2
		306	600	610	638	10	22	30	10.03	13.93
	159	305	600	610	638	10	18	25	12.55	15.47
		306	600	610	638	10	22	30	12.58	16.48
		307	600	610	638	10	25	35	14.13	19.59
		308	600	610	638	10	32	40	14.59	21.36
		309	600	610	642	12	36	45	15.16	24
		205	700	710	738	10	18	25	10.49	13.9
1200	133	305	700	710	738	10	18	25	10.54	13.95
		306	700	710	738	10	22	30	11.3	15.84
		305	700	710	738	10	18	25	14.25	17.66
	159	306	700	710	738	10	22	30	14.29	18.83
		307	700	710	738	10	25	35	15.85	22.2
		308	700	710	738	10	32	40	16.3	24.16
		309	700	710	742	12	36	45	16.87	27.13
		307	700	710	738	10	25	35	21.21	27.06
		308	700	710	738	10	32	40	21.56	29.36
	194	309	700	710	742	12	36	45	24.22	34.24
		305	800	810	838	10	18	25	15.97	19.86
		306	800	810	838	10	22	30	16	21.17
1400	159	307	800	810	838	10	25	35	17.56	24.8
		308	800	810	838	10	32	40	18.02	26.97
		309	800	810	842	12	36	45	18.62	30.3
		307	800	810	838	10	25	35	24.82	31.65
	194	308	800	810	838	10	32	40	23.78	32.37
		309	800	810	842	12	36	45	27.83	39.47

ISO/GB IMPACT ROLLER

Base on 35° trough Angle, 3 equal rollers for 1 idler.

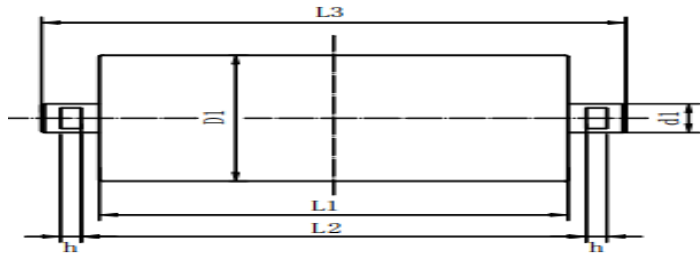


Belt Width	Dia.	Bearing	L1	L2	L3	S	b	d	Rotation Part (Kg)	Weight (Kg)	
650	89	204	250	260	286	10	14	20	3.19	4	
		205	250	260	286	10	18	25	3.49	4.73	
800	89	204	325	351	10	14	20	3.96	4.92	204	
		205	325	351	10	18	25	4.32	5.81	205	
	108	204	325	351	10	14	20	4.99	5.95	204	
		205	325	353	10	18	25	6.39	7.9	205	
	133	205	325	353	10	18	25	7.87	9.37	205	
		305	325	353	10	18	25	8.27	10.17	305	
1000	108	204	380	390	416	10	14	20	6.03	7.16	
		205	380	390	418	10	18	25	7.6	9.4	
		305	380	390	418	10	18	25	8.2	9.8	
	133	205	380	390	418	10	18	25	9.33	11.08	
		305	380	390	418	10	18	25	9.03	11.88	
		306	380	390	418	10	22	30	10.15	13.04	
	159	305	380	390	418	10	18	25	12.63	15.5	
		306	380	390	418	10	22	30	13.53	16.54	
		307	380	390	418	10	25	35	14.54	18.22	
	1200	108	204	465	475	501	10	14	20	7.42	8.75
			205	465	475	503	10	18	25	9.18	11.16
			305	465	475	503	10	18	25	9.58	11.56
306			465	475	503	10	22	30	8.04	11.05	
133		205	465	475	503	10	18	25	11.26	13.53	
		305	465	475	503	10	18	25	11.95	13.03	
		306	465	475	503	10	22	30	13.95	17	
159		305	465	475	503	10	18	25	14.15	16.34	
		306	465	475	503	10	22	30	15.85	19.52	
		307	465	475	503	10	25	35	17.06	21.37	
		133	205	530	540	568	10	18	25	12.81	15.24
			305	530	540	568	10	18	25	13.21	15.94
1400	133	306	530	540	568	10	22	30	17.32	20.14	
		305	530	540	568	10	18	25	15.95	18.39	
		306	530	540	568	10	22	30	17.95	21.56	
	159	307	530	540	568	10	25	35	18.86	23.66	
		308	530	540	568	10	32	40	20.04	26.39	
		309	530	540	572	12	36	45	21.74	27.98	
	194	307	530	540	568	10	25	35	22.38	27.18	
		308	530	540	568	10	32	40	22.63	29.05	
		309	530	540	572	12	36	45	26.95	35.45	

Belt Width	Dia.	Bearing	L1	L2	L3	S	b	d	Rot. Part (Kg)	Weight (Kg)
1600	159	305	600	610	638	10	18	25	17.83	20.56
		306	600	610	638	10	22	30	19.53	23.98
		307	600	610	638	10	25	35	20.74	26.06
		308	600	610	638	10	32	40	22.2	29.31
		309	600	610	642	12	36	45	23.33	30.92
		307	600	610	638	10	25	35	25.31	30.64
	194	308	600	610	638	10	32	40	25.56	32.67
		309	600	610	642	12	36	45	28.5	37.49
		305	700	710	738	10	18	25	19.7	22.71
1800	159	306	700	710	738	10	22	30	21.5	26.25
		307	700	710	738	10	25	35	23.61	29.46
		308	700	710	738	10	32	40	25.67	31.89
	194	309	700	710	742	12	36	45	26.37	33.63
		307	700	710	738	10	25	35	28.44	35.12
		308	700	710	738	10	32	40	28.78	37.49
2000	159	309	700	710	742	12	36	45	31.25	42.36
		305	800	810	838	10	18	25	23.3	26.81
		306	800	810	838	10	22	30	25.5	30.56
	194	307	800	810	838	10	25	35	26.21	33.04
		308	800	810	838	10	32	40	28.79	37.86
		309	800	810	842	12	36	45	29.28	38.74
	194	307	800	810	838	10	25	35	33.12	39.95
		308	800	810	838	10	32	40	33.37	42.44
		309	800	810	842	12	36	45	36.31	47.78

ISO/GB PSK Roller

For Pipe Conveyor



Conveyor Diameter	D1(mm)	L1(mm)	L2(mm)	L3(mm)	h(mm)	d1(mm)	Bearing	Rotation Mass(kg)	Weight(kg)
D100	63.5	115	125	147	6	15	6203	0.96	1.31
D150	76	160	170	192	8	20	6204	1.62	2.22
D200	76	180	190	212	8	20	6204	1.74	2.39
	89	180	190	212	8	20	6204	1.95	2.62
D250	89	220	230	252	8	20	6204	2.22	2.98
	108	220	230	252	8	25	6205	2.75	3.91
D300	89	240	250	272	8	20	6204	2.35	3.17
	108	240	250	272	8	25	6205	2.91	4.15
	133	240	250	272	8	25	6305	4.52	5.88
D350	108	270	280	308	9	25	6305	3.28	4.91
	133	270	280	308	9	25	6305	4.91	6.41
D400	108	335	345	373	9	25	6305	3.82	5.71
	133	335	345	373	9	25	6305	5.73	7.48
D500	133	385	395	425	9	30	6306	7.12	9.92
	159	385	395	425	9	35	6307	9.38	13.22
D600	159	440	450	480	10	35	6307	10.33	14.59
	194	440	450	480	10	40	6308		

Our Work

Long-term Partner

CETEC has focused on expanding its services in the overseas market since 2010, and served the industry leaders such as LafargeHolcim for a long time. The company adheres to the spirit of quality first, and has supported projects in the developing countries all over the world.





Thank You



+86 010 6445 0371



+86 010 6442 3609



cetec@cetecchina.com